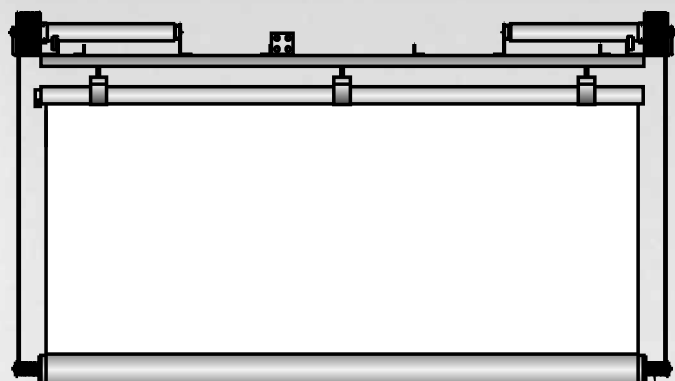


# The Da-Lite Difference.



## Instruction Book for MOTORIZED SCENIC ROLLER SCREEN



### **DA-LITE SCREEN COMPANY, INC.**

3100 North Detroit Street  
Post Office Box 137  
Warsaw, Indiana 46581-0137  
Phone: 574-267-8101  
800-622-3737  
Fax: 574-267-7804  
[www.da-lite.com](http://www.da-lite.com)  
e-mail: [info@da-lite.com](mailto:info@da-lite.com)

# ***IMPORTANT SAFETY INSTRUCTIONS***

When using your video equipment, basic safety precautions should always be followed, including the following:

1. Read and understand all instructions before using.
2. Position the cord so that it will not be tripped over, pulled, or contact hot surfaces.
3. If an extension cord is necessary, a cord with a current rating at least equal to that of the appliance should be used. Cords rated for less amperage than the appliance may overheat.
4. To reduce the risk of electric shock, do not disassemble this appliance. Contact an authorized service dealer when repair work is required. Incorrect reassembly can cause electric shock when the appliance is used subsequently.
5. The use of an accessory attachment not recommended by the manufacturer may cause a risk of fire, electric shock, or injury to persons.

## **SAVE THESE INSTRUCTIONS**

## INSTALLATION

Before proceeding with the installation please read the installation and operating instructions thoroughly. Make sure to recheck measurements of screen and hanger locations before installation. Area must be clear for screen to operate.

With all lid sections removed from shipping container, remove the screws holding the frame to the shipping container (2 per cross brace). The screen can now be carefully lifted out of the container.

### METHOD A

The frame can be mounted to ceiling with 5/16" diameter threaded rods. Level frame from front to back and left to right. Mount from all cross braces (fig. 1).

### METHOD B

Hang from a pipe (fly the screen). Level frame from front to back and left to right. Mount from all cross braces (fig. 2).

**NOTE: Motor pulley must clear pipe. Chains must clear motor tubes.**

### SUGGESTED METHOD OF INSTALLATION

#### METHOD A – SECURE TO CEILING

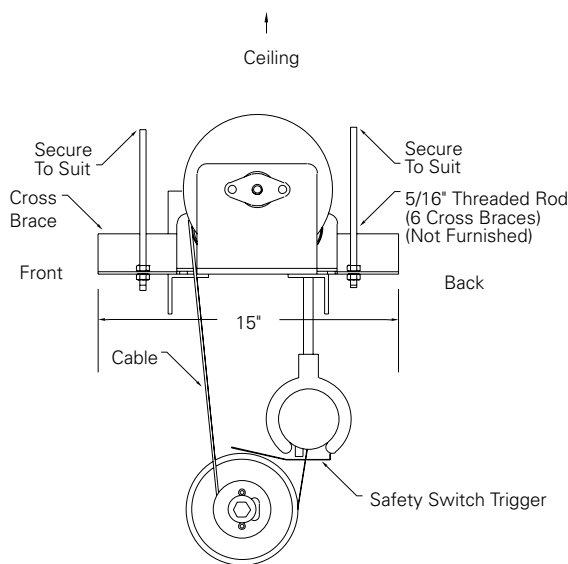


FIG. 1

### SUGGESTED METHOD OF INSTALLATION

#### METHOD B – "FLYING PIPE"

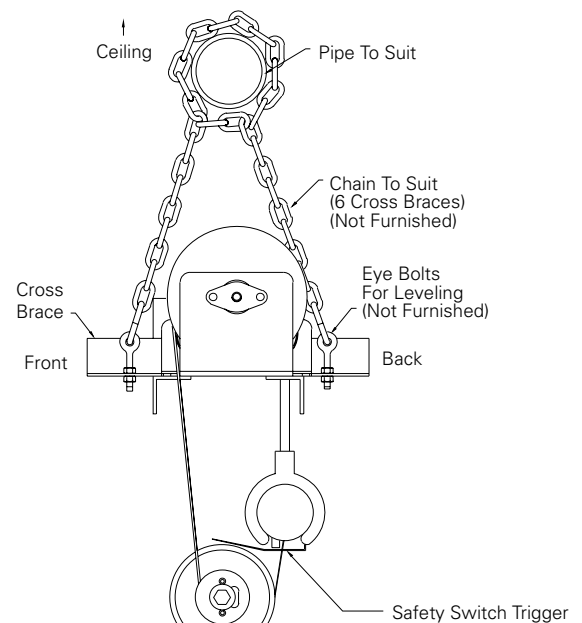


FIG. 2

## ELECTRICAL INSTALLATION

Screen motors have been internally wired at Da-Lite. Wiring designated "external" is completed by installer conforming to local and national codes. Refer to wiring diagram on next page.

Check for satisfactory condition by operating the screen. Be prepared to stop screen. Standard Duty Cycle: 1 MIN. 30 SEC. ON / 45 MIN. OFF.

**CAUTION!** Excessive continuous operation may cause overheating and motors will shut off. Let motors cool 10 to 15 minutes and continue test.

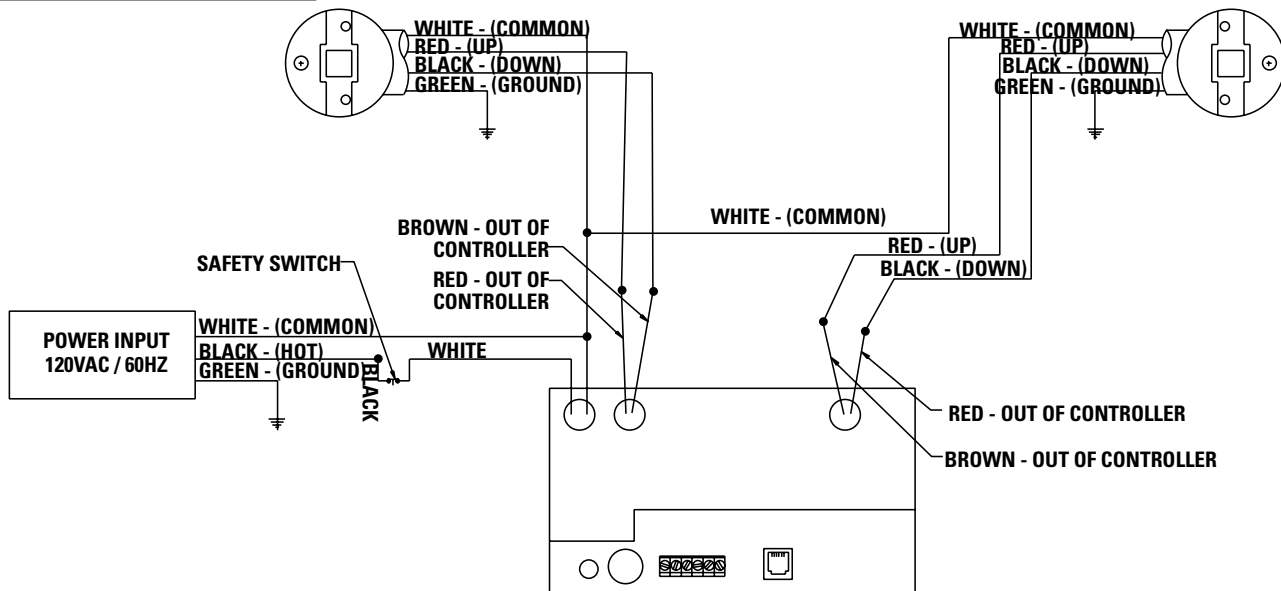
Check the cables to make sure they are winding on the motor and roller pulleys properly.

## SCREEN ADJUSTMENT

1. With screen in complete unrolled position, examine the screen surface carefully. If fabric does not hang flat, loosen the nuts on the eyebolts of the black clamps. Adjust the wingnuts to pull or relax the fabric as needed. Several clamp heights may be adjusted depending on the severity of the hang. After adjustment, tighten the nuts against the underside of the frame. Caution stage hands and others to check area before lowering screen. Do not bump screen with ladders, scenery, etc.

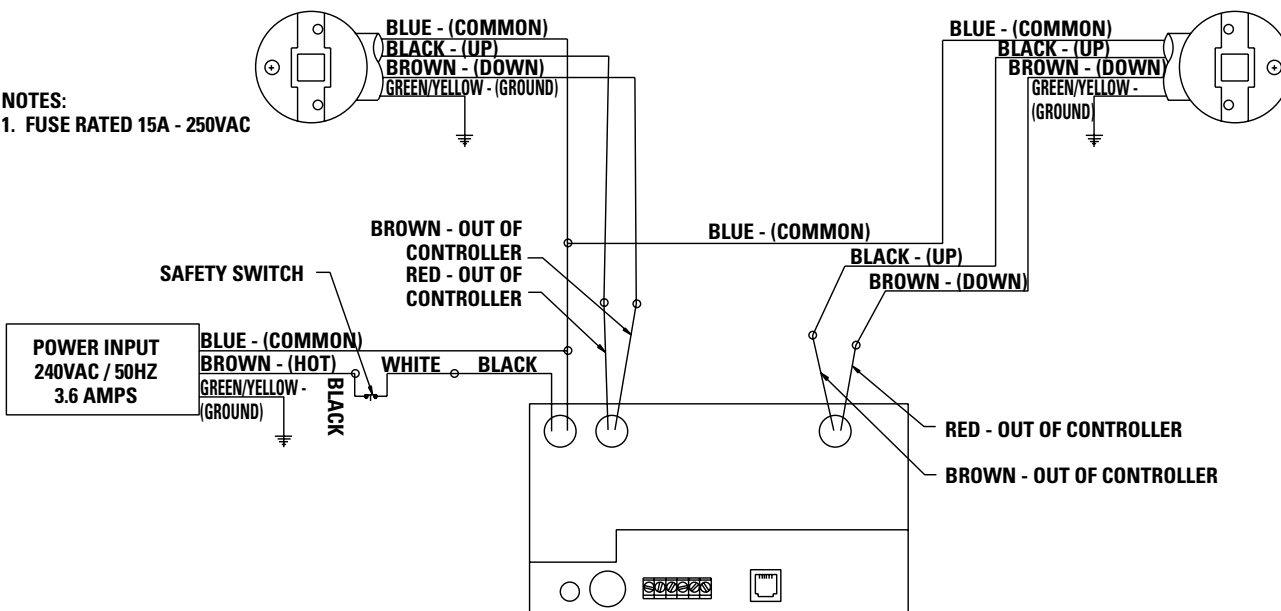
# MOTORIZED SCENIC ROLLER INSTALLATION

## 120V WIRING DIAGRAM



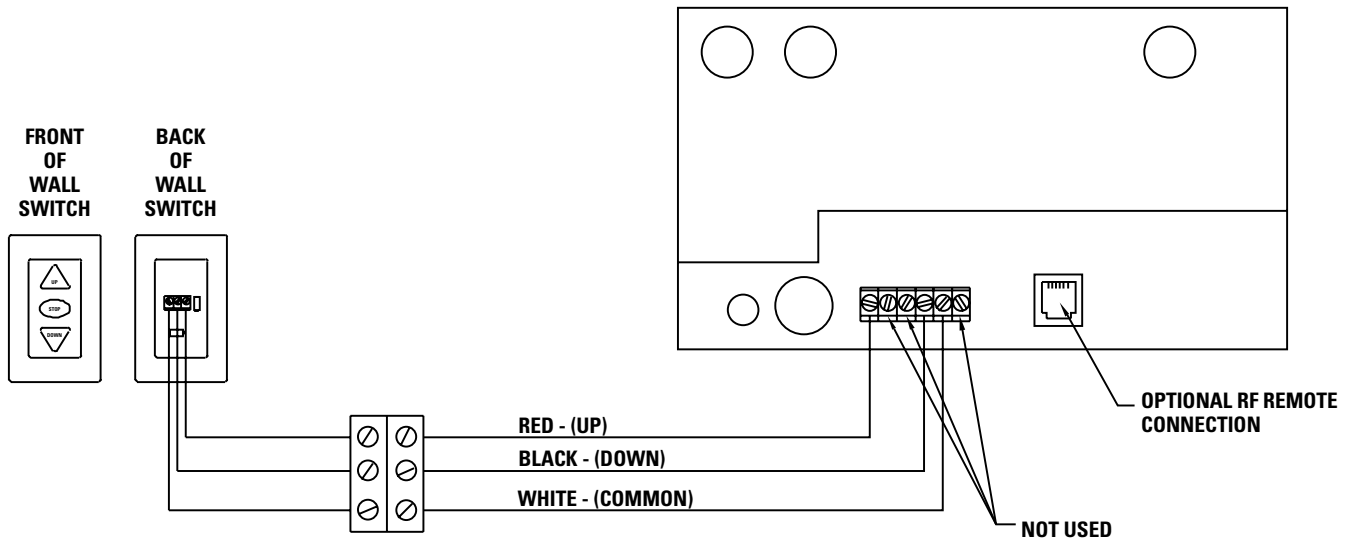
## 240V WIRING DIAGRAM

NOTES:  
1. FUSE RATED 15A - 250VAC



## MOTORIZED SCENIC ROLLER INSTALLATION

### 120V / 240V WALL SWITCH WIRING DIAGRAM



**NOTE: 20-24AWG WIRE RECOMMENDED  
FOR CONNECTING WALL SWITCH TO  
SYCHRONIZATION CONTROLLER**

**IMPORTANT!** The wall switch terminal block can be connected inside the wiring compartment. The controller does not need to be removed from the junction box unless an RF remote is being connected. Use caution when removing the controller from the box as it is easily damaged.

## ***LIMIT SWITCH ADJUSTMENT***

The stop positions of the screen are preset at the factory. If adjustments are necessary, the limit switch screws located at the end of each motor can adjust the stop positions. Use a 5/32" hex key or a flat screwdriver. Adjustments should be made in small increments by turning the adjustment screws a half turn at a time. Refer to figure 3.

### **SETTING THE "DOWN" LIMIT POSITION.**

#### **SCREEN DROPS TOO FAR:**

Left motor (as viewed from audience side): Turn the white limit switch screw clockwise to decrease the amount of fabric drop.

Right motor (as viewed from audience side): Turn the yellow limit switch screw clockwise to decrease the amount of fabric drop.

After adjusting the limit screws on both motors, run the screen down to test the stop position. Repeat until the desired position is set.

#### **SCREEN DOES NOT DROP ENOUGH:**

Left motor (as viewed from audience side): Turn the white limit switch screw counterclockwise to increase the amount of fabric drop.

Right motor (as viewed from audience side): Turn the yellow limit switch screw counterclockwise to increase the amount of fabric drop.

After adjusting the limit screws on both motors, run the screen down to test the stop position. Repeat until the desired position is set. Do not adjust for more drop than what was ordered. At least 1-1/2 wraps of fabric must remain on the roller.

### **SETTING THE "UP" LIMIT POSITION.**

#### **SCREEN TRAVELS UP TOO FAR:**

Left motor (as viewed from audience side): Turn the yellow limit switch screw clockwise to decrease the amount of travel.

Right motor (as viewed from audience side): Turn the white limit switch screw clockwise to decrease the amount of travel.

After adjusting the limit screws on both motors, run the screen up to test the stop position. If the screen travels up too far, the safety stop switch will be activated and all power to the motors will be shut off. You will have to deactivate the switch by hand. To do this, push down on the switch trigger (see Figure 1) to release the switch and have someone run the screen down. This safety switch is to prevent the screen from traveling too far and binding the motors should the motor limit switches fail.

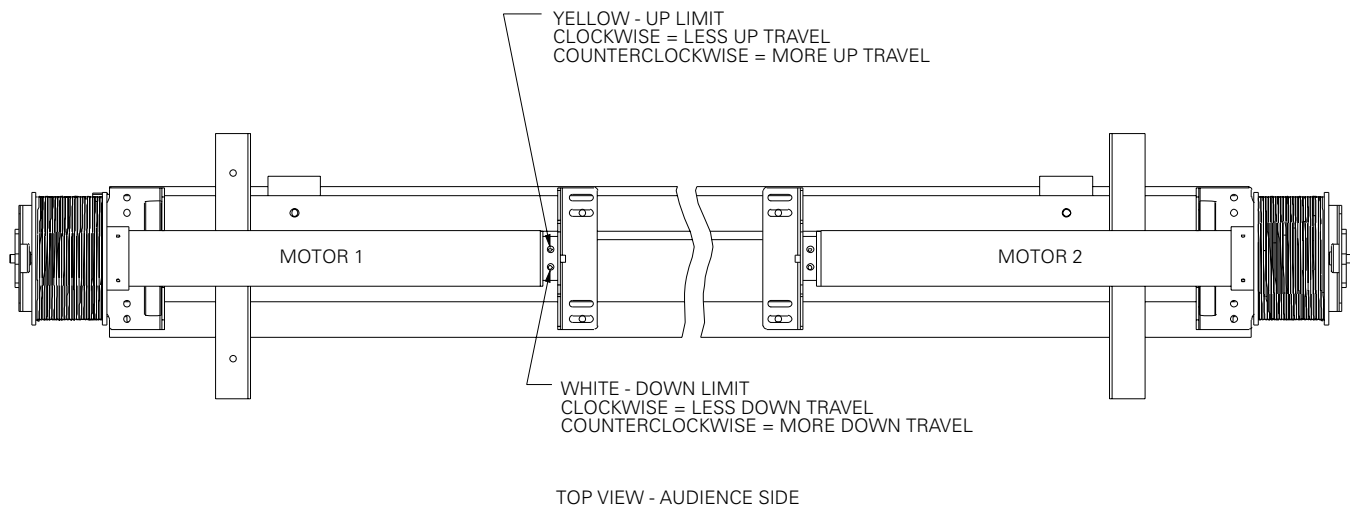
#### **SCREEN DOES NOT TRAVEL UP FAR ENOUGH:**

Left motor (as viewed from audience side): Turn the yellow limit switch screw counterclockwise to increase the amount of travel.

Right motor (as viewed from audience side): Turn the white limit switch screw counterclockwise to increase the amount of travel.

After adjusting the limit screws on both motors, run the screen up to test the stop position. Repeat until the desired position is set.

**FIG. 3**



**LIMITED ONE YEAR WARRANTY  
ON DA-LITE PRESENTATION PRODUCTS**

Da-Lite Screen Company, Inc. warrants its products to the original purchaser only, to be free from defects in materials and workmanship for a period of one (1) year from the date of purchase by the original purchaser provided they are properly operated according to Da-Lite's instructions and are not damaged due to improper handling or treatment after shipment from the factory.

This warranty does not apply to equipment showing evidence of misuse, abuse or accidental damage, or which has been tampered with or repaired by a person other than authorized Da-Lite personnel.

Da-Lite's sole obligation under this warranty shall be to repair or to replace (at Da-Lite's option) the defective part of the merchandise. Returns for service should be made to your Da-Lite dealer. If it is necessary for the dealer to return the screen or part to Da-Lite, transportation expenses to and from Da-Lite are payable by the purchaser and Da-Lite is not responsible for damage in shipment. To protect yourself against damage or loss in transit, insure the product and prepay all transportation expenses.

**THIS WARRANTY IS IN LIEU OF ALL OTHER WARRANTIES, EXPRESS OR IMPLIED, INCLUDING WARRANTIES AS TO FITNESS FOR USE AND MERCHANT ABILITY.** Any implied warranties of fitness for use, or merchantability, that may be mandated by statute or rule of law are limited to the one (1) year warranty period. This warranty gives you specific legal rights, and you may also have other rights, which vary from state-to-state. **NO LIABILITY IS ASSUMED FOR EXPENSES OR DAMAGES RESULTING FROM INTERRUPTION IN OPERATION OF EQUIPMENT, OR FOR INCIDENTAL, DIRECT, OR CONSEQUENTIAL DAMAGES OF ANY NATURE.**

In the event that there is a defect in materials or workmanship of a Da-Lite product, you may contact our Sales Partners at PO Box 137, Warsaw, IN 46581-0137, (574) 267-8101, (800) 622-3737.

**IMPORTANT: THIS WARRANTY SHALL NOT BE VALID AND DA-LITE SHALL NOT BE BOUND BY THIS WARRANTY IF THE PRODUCT IS NOT OPERATED IN ACCORDANCE WITH DA-LITE'S WRITTEN INSTRUCTIONS.**

Keep your sales receipt to prove the date of purchase and your original ownership.